



WHITE 1921

SAINT-TROPEZ

Set in the mythical place des Lices, White 1921 Saint-Tropez offers seven rooms and suites decorated in a bohemian contemporary style.

WELCOME AT WHITE 1921 SAINT-TROPEZ

Decorated in the spirit of the former mansion, the seven rooms and suites offer a contemporary and elegant design.

An eclectic selection of design pieces and slight touches of color give each room a distinctive character.

RESTAURANT

Louis Vuitton turns over the helm of its Saint Tropez restaurant at the Hotel White 1921 to Michelin-starred chef Arnaud Donckele and pastry chef Maxime Frédéric.

A gourmet journey born of the local terroir, a menu of Mediterranean flavours presented with relaxed, welcoming, elegant spirit that Louis Vuitton enthusiastically embraces.

SERVICES

Continental breakfast on request

Concierge service

Parking [subject to availability]

Check-in time: 3:00 pm - Check-out time: noon

IN-ROOM AMENITIES

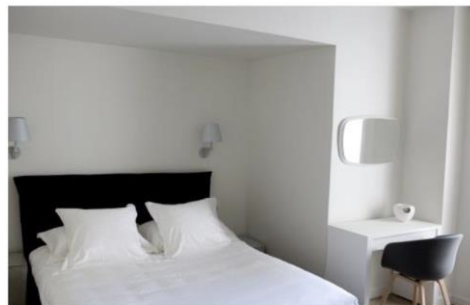
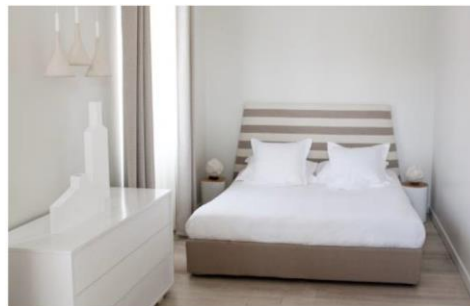
Air conditioning

Acqua di Parma bathroom amenities

International TV channels

Free internet access

Individual safe & Mini bar



INFORMATION DETAILS

CONTACT DETAILS

White 1921 Saint-Tropez
Place des Lices
83990 Saint-
Tropez France

Tel. 33 (0)4 94 45 50 50
Fax. 33 (0)4 94 45 62 21
info.sttropez@white1921.com
www.white1921.com

ACCESS

BY PLANE

Toulon Hyères at 50 km, 1h00 by road
Cannes Mandelieu at 70 km, 1h15 by road
Nice-Côte d'Azur at 90 km, 1h30 by road
Marseille Provence at 145 km, 1h55 by road

BY TRAIN

Saint-Raphaël at 38 km, 45 min by road
Les Arcs Draguignan at 45 km, 1h00 by road
Toulon at 70 km, 1h10 by road

BY CAR

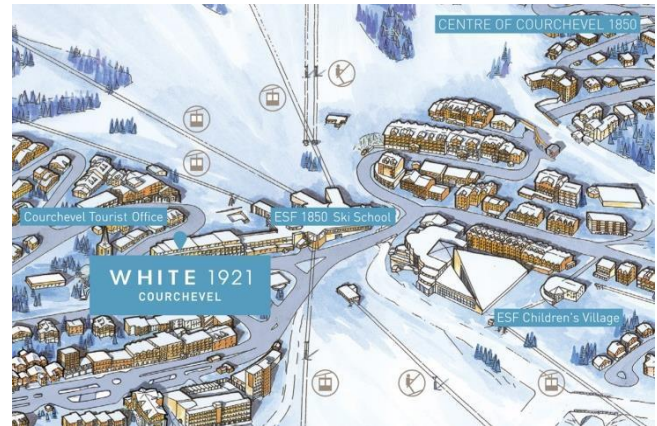
From Marseille / Aix en Provence: A8 motorway, exit
13 Le Cannet des Maures to Saint-Tropez (40 km)
From Nice: A8 motorway, exit 36 Le Muy, then D25
to Sainte-Maxime (40 km)



WHITE 1921

COURCHEVEL

Ideally located on the Croisette, White 1921 Courchevel is the perfect place to indulge in a day out on the slopes and enjoy the festive atmosphere of Courchevel 1850 and its numerous boutiques, bars and restaurants. Designed by renowned architect Jean-Michel Wilmotte, White 1921 Courchevel hotel offers 26 contemporary rooms. Each designed with mountain flair, some feature balconies or open terraces with beautiful views over the slopes or the legendary village.



80 rue du Rocher - 73120 Courchevel 1850
Tel: +33 (0)4 94 45 50 50 - Fax: +33 (0)4 94 45 62 21
Email: info.courchevel@white1921.com - Website: www.white1921.com

