



# WHITE 1921

SAINT-TROPEZ

Set in the mythical place des Lices, White 1921 Saint-Tropez offers eight rooms and suites decorated in a chic and modern style as well as a lounge bar designed by architect Jean-Michel Wilmotte.

## ROOMS & SUITES

Decorated in the spirit of the former mansion, the eight rooms and suites offer a contemporary and elegant design. An eclectic selection of design pieces and slight touches of color give each room a distinctive character.

### SERVICES

Concierge service is available seven days a week from 9 am to 9 pm  
Laundry service

Check-in time: 3:00 pm - Check-out time: noon

Continental breakfast: €32 per person

American breakfast: €39 per person

Parking (subject to availability): daily fee of €39 per vehicle (from 3 pm on arrival date to noon on departure)

### IN-ROOM AMENITIES

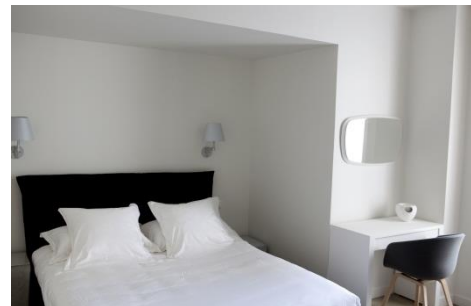
Air conditioning

Acqua di Parma bathroom amenities

International TV channels

Free internet access

Individual safe & Mini bar



# INFORMATION DETAILS

## OPENING DATES

From May 17<sup>th</sup> to October 7<sup>th</sup> 2018

## CONTACT DETAILS

White 1921 Saint-Tropez  
Place des Lices  
83990 Saint-Tropez  
France

Tel. 33 (0)4 94 45 50 50  
Fax. 33 (0)4 94 45 62 21  
info.sttropez@white1921.com  
www.white1921.com

## ACCESS

### BY PLANE

Toulon Hyères at 50 km, 1h00 by road  
Cannes Mandelieu at 70 km, 1h15 by road  
Nice-Côte d'Azur at 90 km, 1h30 by road  
Marseille Provence at 145 km, 1h55 by road

### BY TRAIN

Saint-Raphaël at 38 km, 45 min by road  
Les Arcs Draguignan at 45 km, 1h00 by road  
Toulon at 70 km, 1h10 by road

### BY CAR

From Marseille / Aix en Provence: A8 motorway, exit  
13 Le Cannet des Maures to Saint-Tropez (40 km)  
From Nice: A8 motorway, exit 36 Le Muy, then D25  
to Sainte-Maxime (40 km)

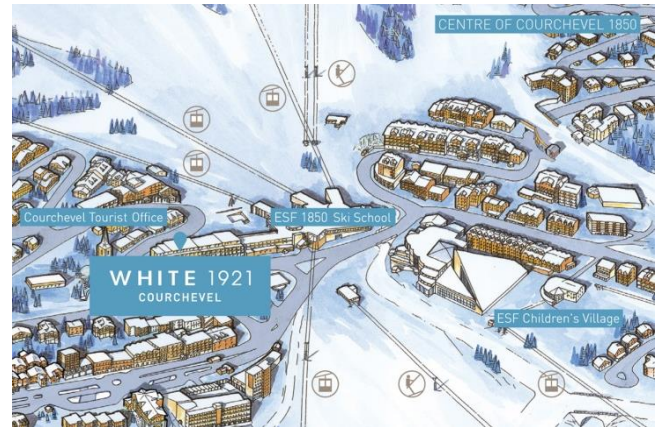




# WHITE 1921

## COURCHEVEL

Ideally located on the Croisette, White 1921 Courchevel is the perfect place to indulge in a day out on the slopes and enjoy the festive atmosphere of Courchevel 1850 and its numerous boutiques, bars and restaurants. Designed by renowned architect Jean-Michel Wilmotte, White 1921 Courchevel hotel offers 26 contemporary rooms. Each designed with mountain flair, some feature balconies or open terraces with beautiful views over the slopes or the legendary village.



Open from December 14<sup>th</sup>, 2018 to April 7<sup>th</sup>, 2019

80 rue du Rocher - 73120 Courchevel 1850

Tel: +33 (0)4 94 45 50 50 - Fax: +33 (0)4 94 45 62 21

Email: [info.courchevel@white1921.com](mailto:info.courchevel@white1921.com) - Website: [www.white1921.com](http://www.white1921.com)

